

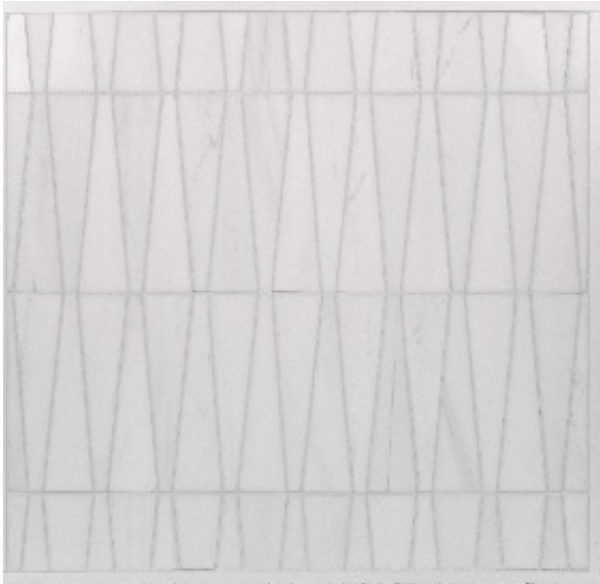


— DOLOMITE —

A —

DOLOMITE

WATERJET



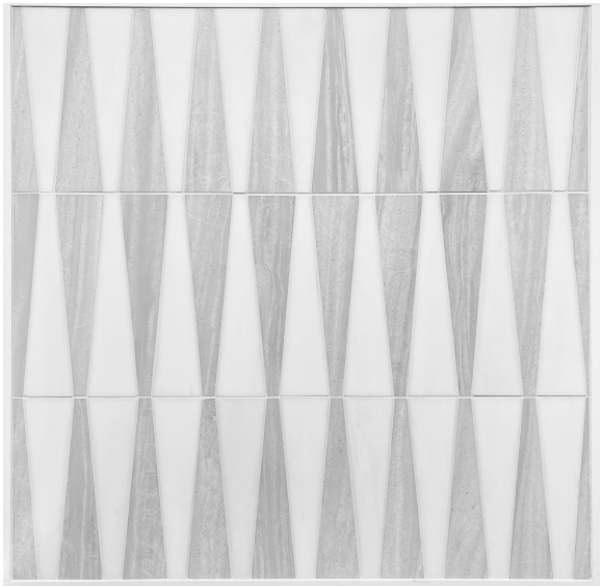
Cleopatra (Dolomite)

Honed/Polished
8.15" x 8", 3/8" thick
CLEODOL



Wave (Dolomite)

Honed / Polished
12" x 11", 3/8" thick
WAVECG



Cleopatra

Nestos Honed/ Dolomite Polished
8.15" x 8", 3/8" thick
CLEODOL



Cypress Key

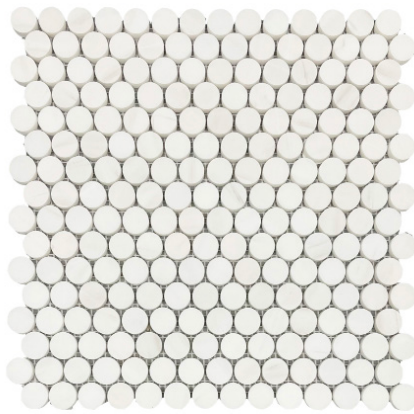
Nestos Honed/ Dolomite Polished
WJDHCYKEY

DOLOMITE

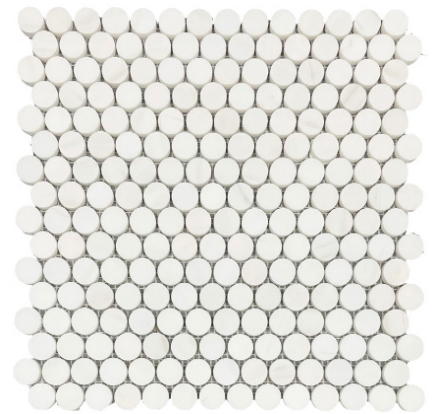
MOSAICS



Adelaine Hexagon
Honed
11.81" x 11.81", 3/8" thick
DOLHHADHEX



Penny Rounds
Honed
12" x 11.42", 3/8" thick
DOLHHPR



2" Dot
Honed
12" x 12.375", 3/8" thick
DOLHDOT2

FIELD TILES



12" x 24"
Honed/Polished
12" x 24", 3/8" thick
DOLH1224 (Honed)
DOLP1224 (Polished)



3" x 12"
Honed/Polished
3" x 12", 3/8" thick
DOLH312 (Honed)
DOLP312 (Polished)

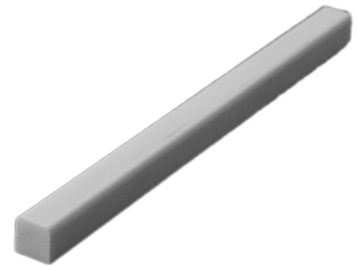


12" x 12"
Honed
12" x 12", 3/8" thick
DOLH12



12" x 24"
Honed
6" x 12", 3/8" thick
DOLH612

TRIM & FINISHES



Box Liner
Honed
3/4" x 12", 3/4" thick
DOLHHBOXL

DOLOMITE

SPECIFICATIONS

Custom sizes and finishes available upon request.

*Always call for current lot colors, box counts, and sheet sizes. Sheet sizes often change with each shipment.

PRODUCT	FINISH	SKU	SIZE*	THICKNESS	SQ. FT./PIECE OR SHEET*	SQ. FT./BOX	FULL BOX OR PER SHEET
MOSAICS/ WATERJET							
Adelaine Hexagon	Honed	DOLHHADHEX	11.81" x 11.81"	3/8"	0.97 sqft / sheet	Call for box counts	Per piece
Penny Rounds	Honed	DOLHHPR	12" x 11.42"	3/8"	0.95 sqft / sheet	Call for box counts	Per piece
Cleo (Dolomite)	Honed, Polished	CLEODOL	8.15" x 8"	Call for Thickness	0.45 sqft/sheet	Call for box counts	Call for current inventory
Cleo (Dolomite/Nestos)	Honed, Polished	CLEONEDO	8.15" x 8"	Call for Thickness	0.45 sqft/sheet	Call for box counts	Call for current inventory
Cypress Key Dolomite/Nestos	Honed	WJDHCYKEY		3/8"	0.95 sheet	Call for box counts	Per Sheet
2" Dots	Honed	DOLHDOT2	12"x12.375"	3/8"	1.03 sqft/sheet	Call for box counts	Per Sheet
TRIM & FINISHES							
Box Liner	Honed	DOLHHBOXL	3/4" x 12"	3/4"	1 linear foot / piece	Call for box counts	Per piece
Saddle	Honed	DOLHHSAD436	4" x 36"	3/4"	3 linear feet / piece	Call for box counts	Per piece
FIELD TILES							
12" x 24"	Polished	DOLP1224	12" x 24"	3/8"	2 sqft / piece	10sqft	Full Box
12" x 24"	Honed	DOLH1224	12" x 24"	3/8"	2 sqft / piece	10sqft	Full Box
3" x 12"	Polished	DOLP312	3" x 12"	3/8"	0.25 sqft / piece	5sqft	Full Box
3" x 12"	Honed	DOLH312	3" x 12"	3/8"	0.25 sqft / piece	5sqft	Full Box
6"x12"	Honed	DOLH612	6"x12"	3/8"	1.03s qft / Sheet	5 sqft	Full Box
12"x12"	Honed	DOLH12	12"x12"	3/8"	1 sqf / Piece	10 sqft	Full Box

DOLOMITE

CARE AND MAINTENANCE

INSTALLATION

All natural stone products may vary slightly in color, shade, finish, and size. Perform a thorough inspection of the material upon delivery and before installation. ***Use constitutes acceptance. No claims will be accepted after installation.***

Please refer to the latest version of the *TCNA Handbook for Ceramic, Glass, and Stone Tile Installation*, www.tcnatile.com, for instructions on how to install natural stone mosaic, tile, and slabs.

For best results, work with a professional, qualified tile contractor.

CARE AND MAINTENANCE

Allstone natural stone products can be cleaned with a pH neutral stone cleaner or similar mild detergent. Avoid contact with any acidic chemicals, such as vinegar, lemon juice, and abrasive cleaners, as these can etch or erode the surface of the stone.

Natural stone products are porous by nature and can absorb liquids, oils, and dirt if not properly sealed. Allstone recommends sealing the stone after installation with a high quality, penetrating/impregnating stone sealer for a natural look, or an enhancing sealer for a more enriched look. Follow the manufacturer's instructions on application; we recommend testing a small, inconspicuous area before applying the sealer to the entire installation. Reference the manufacturer's literature for how long the sealer is effective and reapply as directed to protect your natural stone installation.

USAGE

- Interior Wall
- Interior Floor
- Kitchen Backsplash
- Kitchen Counter
- Shower Wall
- Shower Floor

WARRANTY

We do not offer a warranty on our products. When properly installed and maintained, Allstone natural stone products will remain a jewel in your home for generations to enjoy. We recommend working with a professional, qualified tile contractor to ensure the longevity of your stone. Our sales team is available at any point during your installation process to offer guidance or assistance so that your end result is a masterpiece.

DISCLAIMER

Allstone does not manufacture installation products or cleaning/maintenance products. Installation, care, and maintenance instructions have been provided to our customers as an information resource only. For questions on how to handle a specific product, application instructions, and warning concerning potential health hazards, please contact the product manufacturer directly prior to usage.

A